

Colorado Emergency Operations Center - Process Overview



COLORADO

**Division of Homeland Security
& Emergency Management**

Department of Public Safety

All incidents are local

Command and Control

- On-scene Incident Commander/Local Jurisdiction

Support and Coordination

- Local EOC – Local Emergency Support Functions
- State EOC – State Agencies & Emergency Support Functions
- Federal Agencies

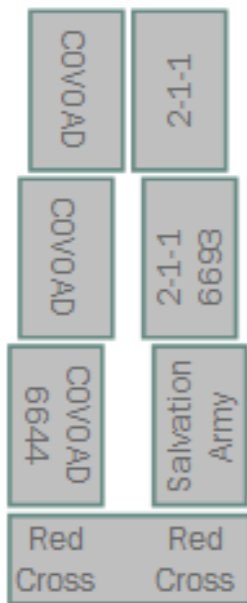


CO L O R A D O

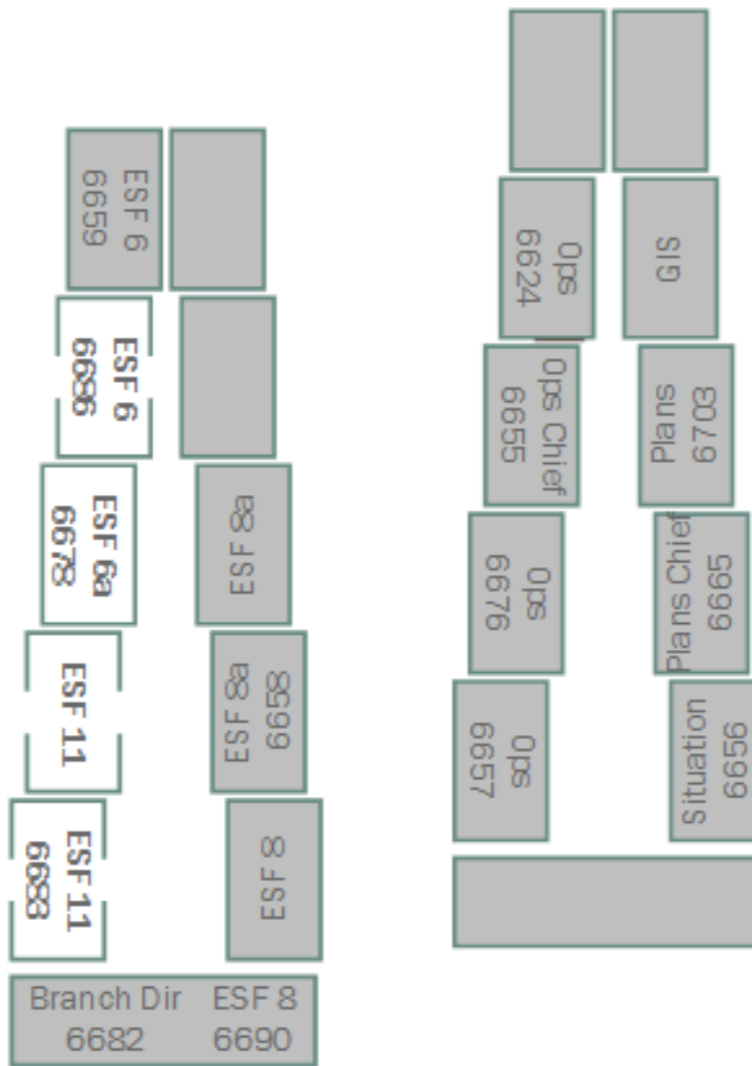
**Division of Homeland Security
& Emergency Management**

Department of Public Safety

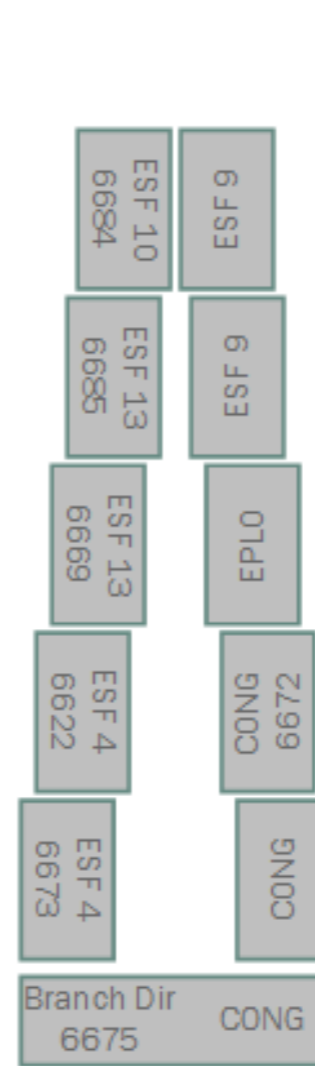
NGO



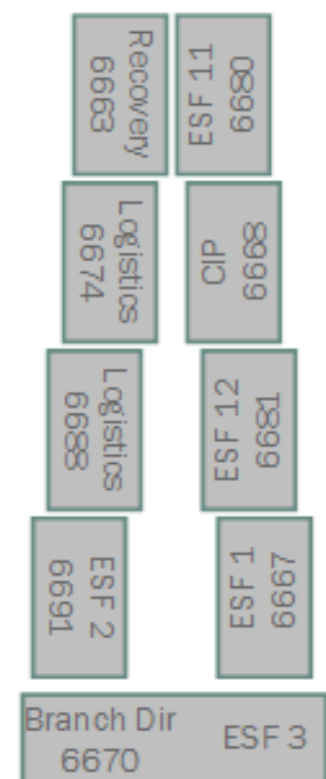
Human Services



Emergency Services



Infrastructure



IT Desk
6652

PIO
6653

PIO

PIO
6654

Director

EOC
Manager

Ad-hoc Meetings

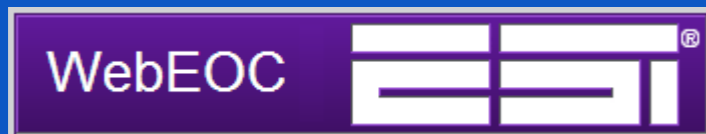
Federal Partners

COLORADO

Division of Homeland Security & Emergency Management

Department of Public Safety





- WebEOC: Incident Management software system which allows notification, situational awareness and near real time resource management of incidents
- ROSS: (Resource Ordering Status System) NWCG sponsored national resource management and dispatch system (All-Hazards by 2014)
- EMAC: (Emergency Management Assistance Compact) Web based intra-state program for **declared** state to state resource ordering and tracking. Colorado Adopted into law 2007.
- Connect Colorado: State statute required database of Government and Private Sector resources for deployment (Under contract)
- IQS Web (Incident Qualification System) : NWCG and AH quals database
- EM Systems: Resource and notification system for Health Care systems



COLORADO

**Division of Homeland Security
& Emergency Management**

Department of Public Safety

State and EMAC Mission-Ready Packages



Mission Ready Packages:

Pre packaged


Cost pre established


15 day deployment with 1 day each end for travel


Reimbursed within 90 day

~30 Animal & Ag-related Mission-Ready Packages Identified

Flexible to meet needs

	State Emergency Operations Center Mission Capability Sets # 0001b / Rotary Wing UH-60A/L Blackhawk(Lift, Sling, S&R)
	ACTIVATION PROCEDURES
	LOCAL / STATE ACTIVATION PROCEDURES NORMAL HOUR ACTIVATION PROCEDURES

	State Emergency Operations Center Mission Capability Sets # 0014 National Guard Security Force Package
	ACTIVATION PROCEDURES
	LOCAL / STATE ACTIVATION PROCEDURES NORMAL HOUR ACTIVATION PROCEDURES

	State Emergency Operations Center Mission Capability Sets #0016f / Military Power Generation Package
	ACTIVATION PROCEDURES
	LOCAL / STATE ACTIVATION PROCEDURES NORMAL HOUR ACTIVATION PROCEDURES



COLORADO

Division of Homeland Security & Emergency Management

Department of Public Safety



**State Emergency Operations Center
Mission Capability Sets
ESF-11-0060a-Type I Non-Domesticated / Exotic Animal
Transport Team Support Package**

ACTIVATION PROCEDURES

LOCAL / STATE ACTIVATION PROCEDURES

NORMAL HOUR ACTIVATION PROCEDURES

1. DHSEM/OEM is the lead agency charged with activation and mobilization of resources outside local / regional mutual aid or auto aid capability at a State Level. Any resource may deploy within its area or responsibility when requested locally.
2. The Agency Having Jurisdiction should request the activation of a Type I Non-Domesticated / Exotic Animal Transport Team Support Package using the Request for Assistance form.
3. SEOC Operations will validate the request of Type I Non-Domesticated / Exotic Animal Transport Team Support Package with the Agency Having Jurisdiction through direct communications or through the DHSEM/OEM Field Manager.
4. DHSEM/OEM Operations Section will task ESF-11 Colorado Department of Agriculture in conjunction with the Colorado Division of Wildlife for availability & specific mission capability.
5. SEOC ESF-11 in conjunction with Colorado Division of Wildlife will complete RFA / ICS-213-rr and coordinate deployment of requested mission.
6. SEOC Plans Section will send the completed Request for Assistance or ICS-213rr as an official resource order and instructions for deployment to the Agency Having Jurisdiction.
7. DHSEM/OEM is responsible for communication with Agencies having Jurisdiction (AHJ) to determine status of ongoing incident and their initial needs through the DHSEM/OEM Field Manager and /or DHSEM/OEM Operations.
8. Local/Regional DHSEM/OEM representatives are the primary points of contact with AHJ. DHSEM/OEM Field Manager serves as the primary communication link to the State DHSEM/OEM and serves as the State's local line officer.

AFTER HOURS ACTIVATION PROCESS

1. At the onset of an incident, local and tribal jurisdictions should call the Office of Emergency Management (OEM), Duty Officer at 303-472-4046 or the State Emergency Line at 303-279-8855
2. Provide the following information:
3. Location of the incident
4. Type of Incident
5. Local resources and support committed
6. Any state resource support needs (if known)
7. The Duty Officer or Emergency Line Attendant will contact the Regional Field Manager and relay pertinent information.
8. The Field Manager will activate as needed for the incident and begin communicating with the local/tribal emergency manager on coordination needs for the requested resource and follow normal duty hour process.

FEDERAL ACTIVATION PROCEDURES

•

ESF / AGENCY		MISSION PACKAGE IDENTIFIER / NAME	
ESF-11 Colorado Department of Agriculture		ESF-11-0060a-TYPE I NON-DOMESTICATED / EXOTIC ANIMAL TRANSPORT TEAM SUPPORT PACKAGE	
TASK & PURPOSE		MISSION FUNCTION	
<ul style="list-style-type: none"> • The Animal Transport Team is responsible for transporting animals away from an impacted area (typically to another area or refuge). • NON-DOMESTICATED / EXOTIC ANIMALS ONLY 		<ul style="list-style-type: none"> • Provides the transportation of animals from temporary holding facilities to designated shelter as well as transportation to and from staging areas and pickup points. • Assists the Capture and Collection Team in loading and unloading animals in the field and at designated shelters or temporary holding facilities. 	
SUPPORTING ESF'S / AGENCIES		MISSION CAPABILITY LIMITATIONS	
<ul style="list-style-type: none"> • ESF-5 Colorado Division of Emergency Management • ESF-6c American Red Cross • ESF-7 Colorado Office of Emergency Management • Colorado Division of Wildlife • United States Department of Agriculture (USDA) 		<ul style="list-style-type: none"> • Food and water must be provided by shelter 	
RECOMMENDED PERSONNEL		RECOMMENDED EQUIPMENT	
2 Personnel – Animal Transport Specialist <ul style="list-style-type: none"> • For Types with multiple Animal Transport Specialist. One specialist will assume the lead role for managing support staff and the other Animal Transport Specialist will assume the role of an assistant to the lead Specialist who is also in charge of a vehicle. 		<ul style="list-style-type: none"> • Basic communications equipment, relevant forms, and applicable standard operating procedures • All necessary equipment and supplies for transporting designated animals and appropriate species. • Vehicle – Properly sized for load, weight capacity, and the number of animals being transported • Cell/Sat phones • GPS Unit • Laptop computer • Incident management kit 	
SUPPORT REQUIREMENTS		WORKS WITH OTHER CAPABILITIES	
<ul style="list-style-type: none"> • Will require billeting and meal support • Fuel for vehicle • Animal food and water supplies • Maps of disaster response area 		<ul style="list-style-type: none"> • Local and State IMT's • Local EOC's • Other Animal Emergency Response capabilities 	
N-HOUR SEQUENCE		SPECIAL INSTRUCTIONS	
<ul style="list-style-type: none"> • N+12 		<ul style="list-style-type: none"> • Must be self-supporting for up to first 72hrs <ul style="list-style-type: none"> • Interface with local shelter operations • 14 day deployment • Cost will vary upon number of crates returned • Specific equipment needs (details on species and numbers if known) should be specified as part of the ordering process 	
COST PER 12 Hr. Operational Period			
PERSONNEL	EQUIPMENT	TOTAL COST ESTIMATE	
\$1,200.00	\$1,000.00	\$2,200.00	



COLORADO

Division of Homeland Security & Emergency Management

Department of Public Safety

Chris Sorensen - Operations Section Chief

chris.sorensen@state.co.us

720-852-6626



COLORADO

**Division of Homeland Security
& Emergency Management**

Department of Public Safety