



Georgia's Work With Food & Ag Food Critical Infrastructure

Dr. Bill Thomas

Food Defense Specialist

University of Georgia

Criticality in the Food and Agriculture Sector Workshop

Georgia Food Defense Team



Georgia Food Defense Team

- Georgia Emergency Management Agency/Homeland Security
 - Dr. Paul Williams
 - Marc Vinson, Homeland Security Advisor & Staff
 - PSA
- University of Georgia
 - Dr. Bill Thomas, Ag Economist
 - Dr. Jim Daniels, Food Scientist & Staff
- Georgia Tech Research Institute
 - Mark Hodges & Eric Oliver



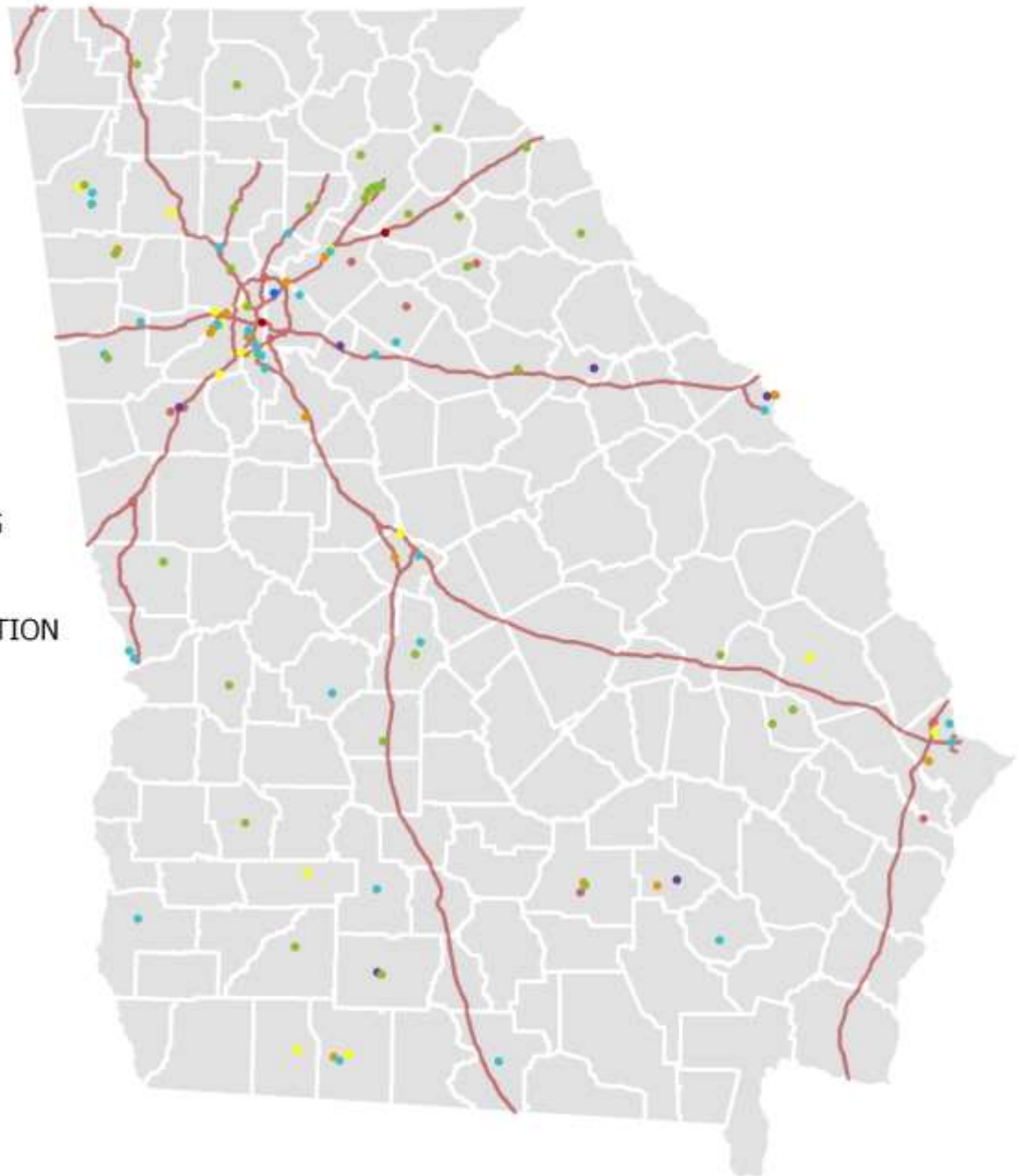
Identification Steps



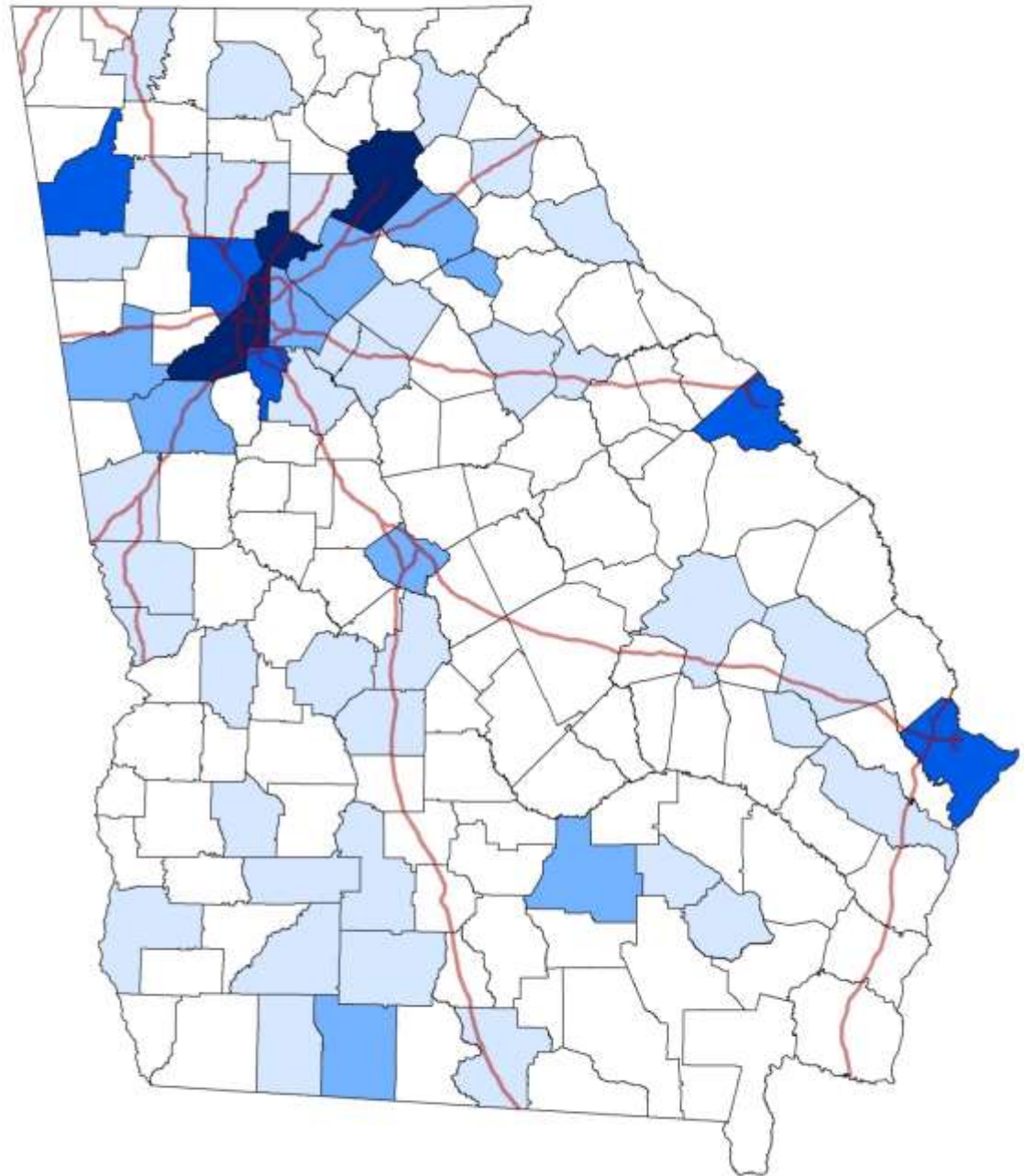
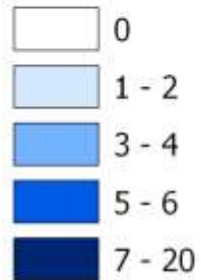
- Sector Analysis using IMPLAN & other data
- FASCAT on top scoring systems
- Nomination of “Low Hanging Fruit”
- 3 Systems nominated in 2011
- 2 Systems nominated in 2012
- ID of Level 3 assets sufficient for future
 - 200 Level 3 assets

CRITICAL INFRASTRUCTURE SITES, ALL TYPES

- MEAT SLAUGHTER / PROCESSING
- POULTRY SLAUGHTER / PROCESSING
- DAIRY PROCESSING
- FOOD MANUFACTURING / DISTRIBUTION
- FOODSERVICE DISTRIBUTOR
- RETAIL DISTRIBUTION CENTER
- RETAIL / WHOLESALE LOCATION
- FOOD WAREHOUSE



CRITICAL INFRASTRUCTURE SITES BY COUNTY, ALL TYPES





Who to Work With

- We started with Low Hanging Fruit
 - Some came to us
 - Worked with Associations
 - Worked with GA Dept of Ag
- Not all CI is interested in Critical Infrastructure/Food defense



Typical Scenario



- Work with Champion to set stage
- Enter asset into ACAMS
- Meet and greet meeting (1-2 hours)
- Develop customized assessment tool
- Site visit (1 ½ days)
 - Assessment day 1
 - Out brief at later time
 - Observations for consideration
 - Offer to assist with Food Defense Plan
- Update ACAMS
- Validate with exercise



What Kind of Tools

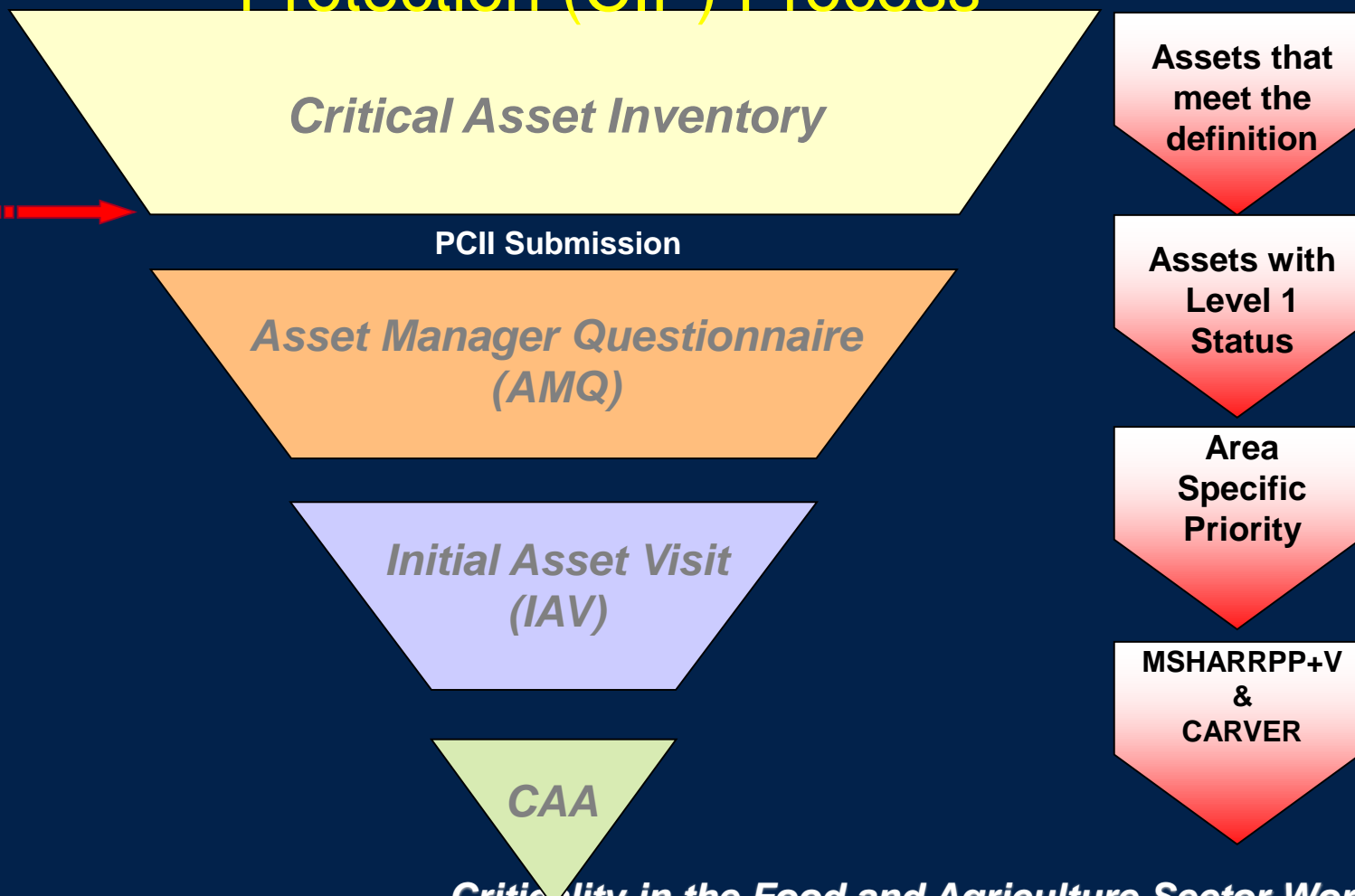
- Have worked with HSA
- Tools are ACAMS based
 - General areas use Asset Manager Questionnaire
 - Food Specific questions based on DoD, FDA, USDA, other sources
 - Media
 - Some questions change with system



ACAMS Workflow



ACAMS Critical Infrastructure Protection (CIP) Process

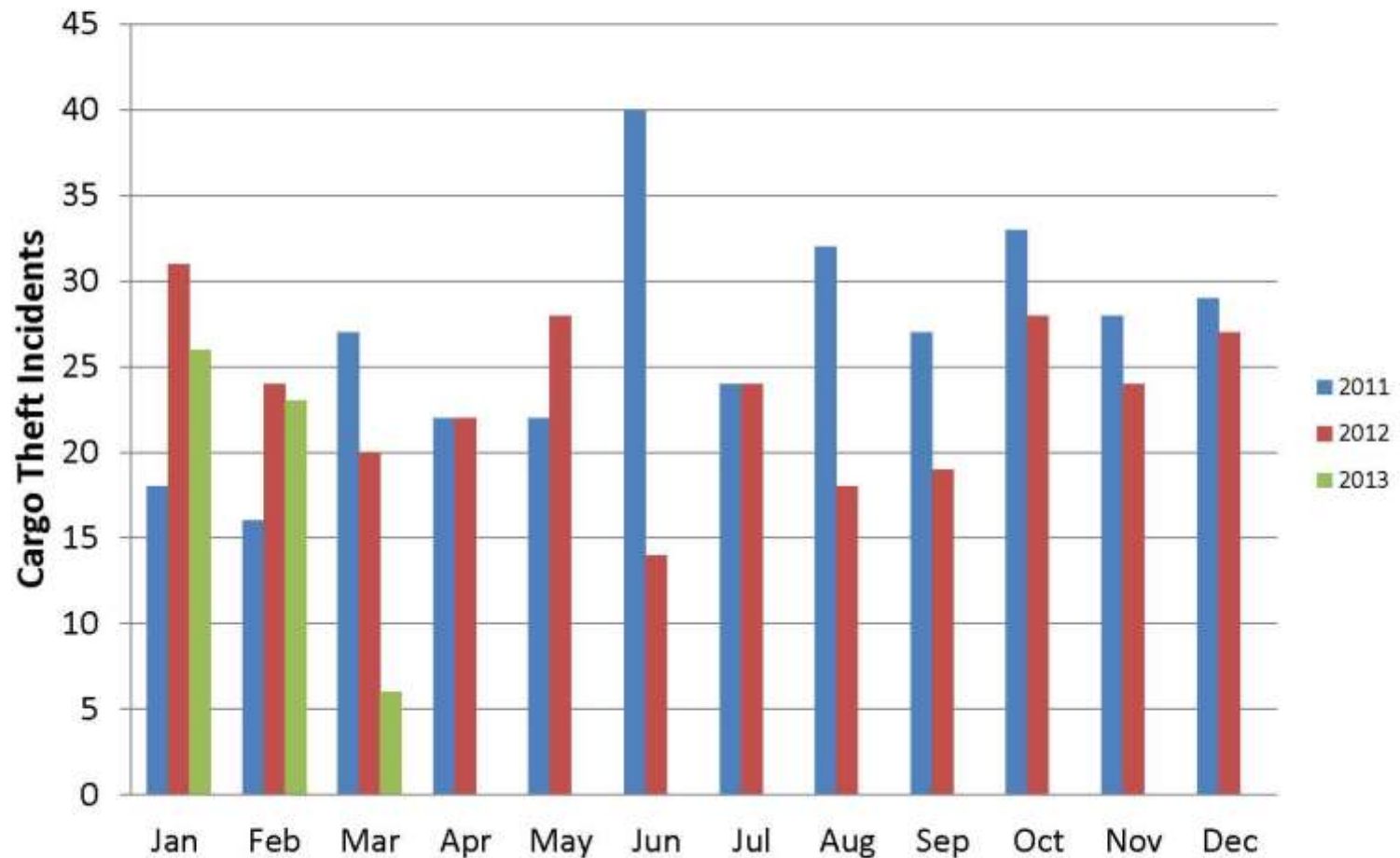


Criticality in the Food and Agriculture Sector Workshop

Georgia Food Defense Team

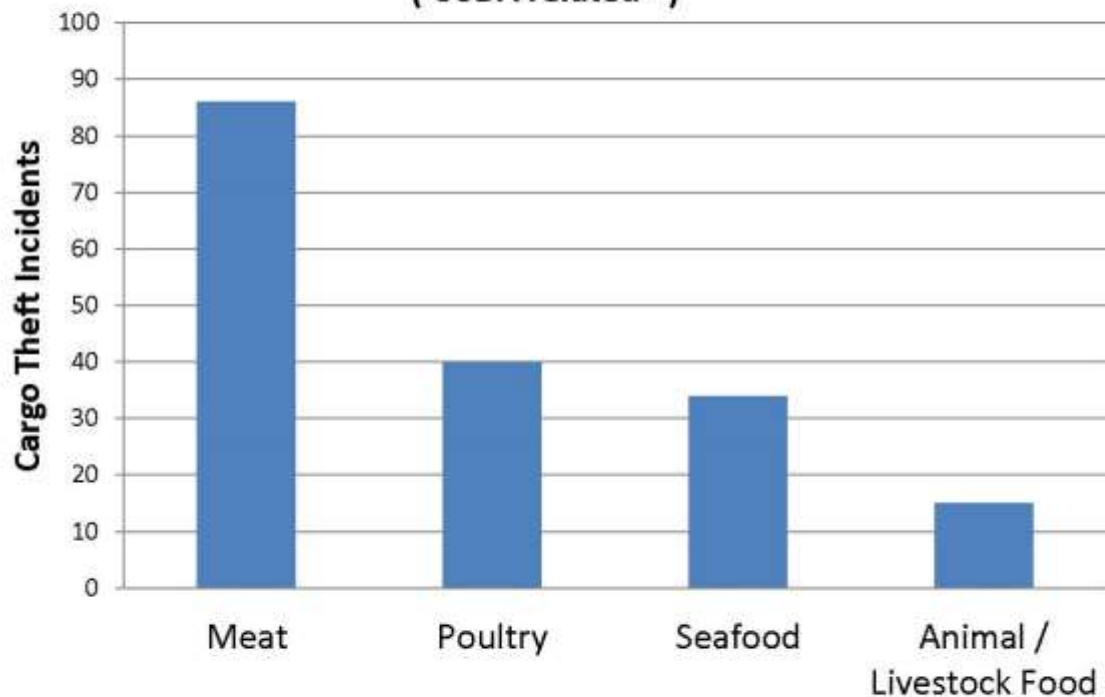
Data Analytics

US Food and Beverage Thefts



USDA Related Theft Incidents

2012 Cargo Theft Incidents
(USDA related *)



FICTICIOUS PICKUPS

Category	2011	2012	2013	Total
Meat	5	6	6	17
Poultry	2		1	3
Seafood	2			2



Georgia Bureau of Investigation Major Theft Unit



- Major Theft Unit Operational January 1, 2009
- The State of Georgia has become a target for cargo thieves operating in the southeastern United States and is now one of the leading states for cargo crimes. Consistently in Top Five.
- The total recoveries made by the MTU total nearly \$32,000,000 million
- The MTU has assisted in the recovery of \$1.2 million of contraband from transportation related cases.
- The MTU has investigated over 100 cargo theft cases since January 1, 2009
- The MTU has arrested 123 subjects for Cargo Theft Related Crimes



Driver Give-up



07-084208

- ✓ Driver picks up iced packed chicken load in North Carolina
- ✓ Driver arrives early at consignee and is turned away
- ✓ Driver goes to truck stop and makes new friends
- ✓ New friends offer him \$1200 in cash and crack cocaine for his load, driver agrees. After smoking some crack, he drives to a pallet company. After the trailer is (unloaded on the dock) he drives to an extended stay hotel
- ✓ Carrier calls 911 and tells me that his driver missing, last know location is truck stop
- ✓ I locate driver at extended stay hotel. Driver confesses and gives me a general idea of where the load may be
- ✓ I drive to pallet company and locate load which is now on a reefer trailer that is out of fuel. Employee asks me to assist him with getting the refer started
- ✓ Employee realizes who I am, states I don't know anything about this stolen chicken
- ✓ SSA Ken Golec and Senior Investigator Ken Cash are called to the recovery location to assist with recovery

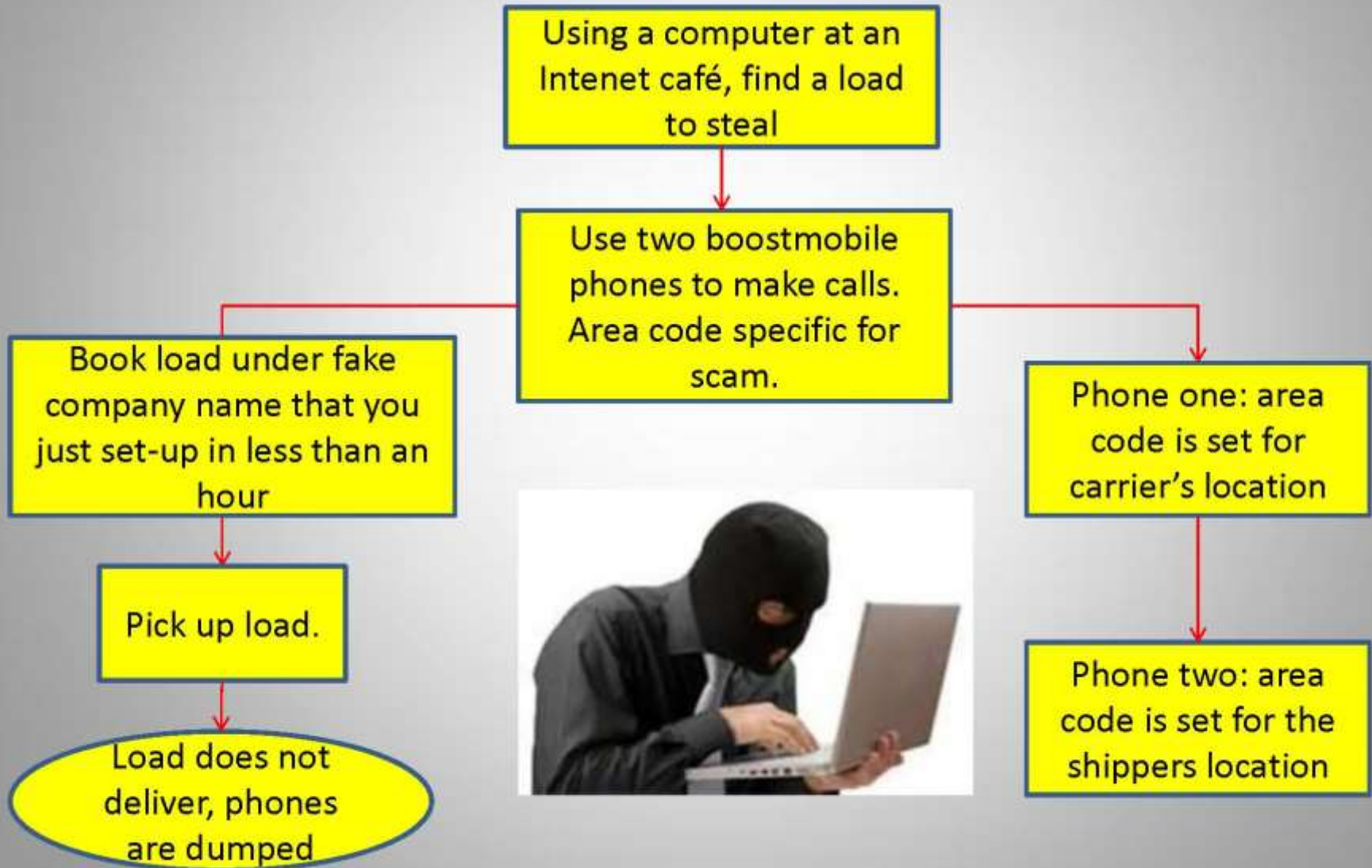
Full Trailer Load Thefts

Organized Theft Groups

- **Ethnic Based**
- **Cargo Theft is preplanned and highly coordinated**
- **Extensive Surveillance of Target Location**
- **Identify company security protocols**
- **Follow Loads to establish pattern**
- **Follow the targeted load until it stops and is left unattended**
- **Abandon Stolen Tractor and Attach Their Tractor to Stolen Trailer**



Fictitious Pickups



Setting Up a Fraudulent Trucking Company

- ✓ Secretary of State: Set up company name. Optional, not required. \$100 paid by credit card if bad guy chooses to obtain a registered name
- ✓ Secure FEIN by using a false Social Security number. \$0 cost
- ✓ Can't make up a name, go to the cemetery
- ✓ Go on-line and obtain MC number. Credit card transactions: \$385.
- ✓ Call insurance company and secure cargo and liability. Down payment is a credit card transaction: \$1700
- ✓ Use a magic Jack phone or a Boost Mobile phone and start making calls.
- ✓ Pick up a load and disappear.
- ✓ Dump phones, go to Wal-Mart and purchase new phones and repeat.

Identity Theft/Cargo Theft

Cargo Theft from Internet Postings

- **Steal Identity of Legitimate Trucking Company**
- **Create Trucking Company for Purpose of Cargo Theft**
- **Use Information Listed on Internet/ Obtain DOT #**
- **Load is Picked up with Information provided by Broker**



Cargo Theft Tactics

Warehouse Burglaries

- **Call Business Posing as Alarm Company Employees**
- **Extensive Surveillance of Location**
- **Establish Multiple Escape Routes**
- **Prefer Long Holiday Weekends**
- **Cut Phone Lines or Set Off Alarm to Observe Response**
- **Will Not Commit a Burglary W/O Observing Police Response**





