

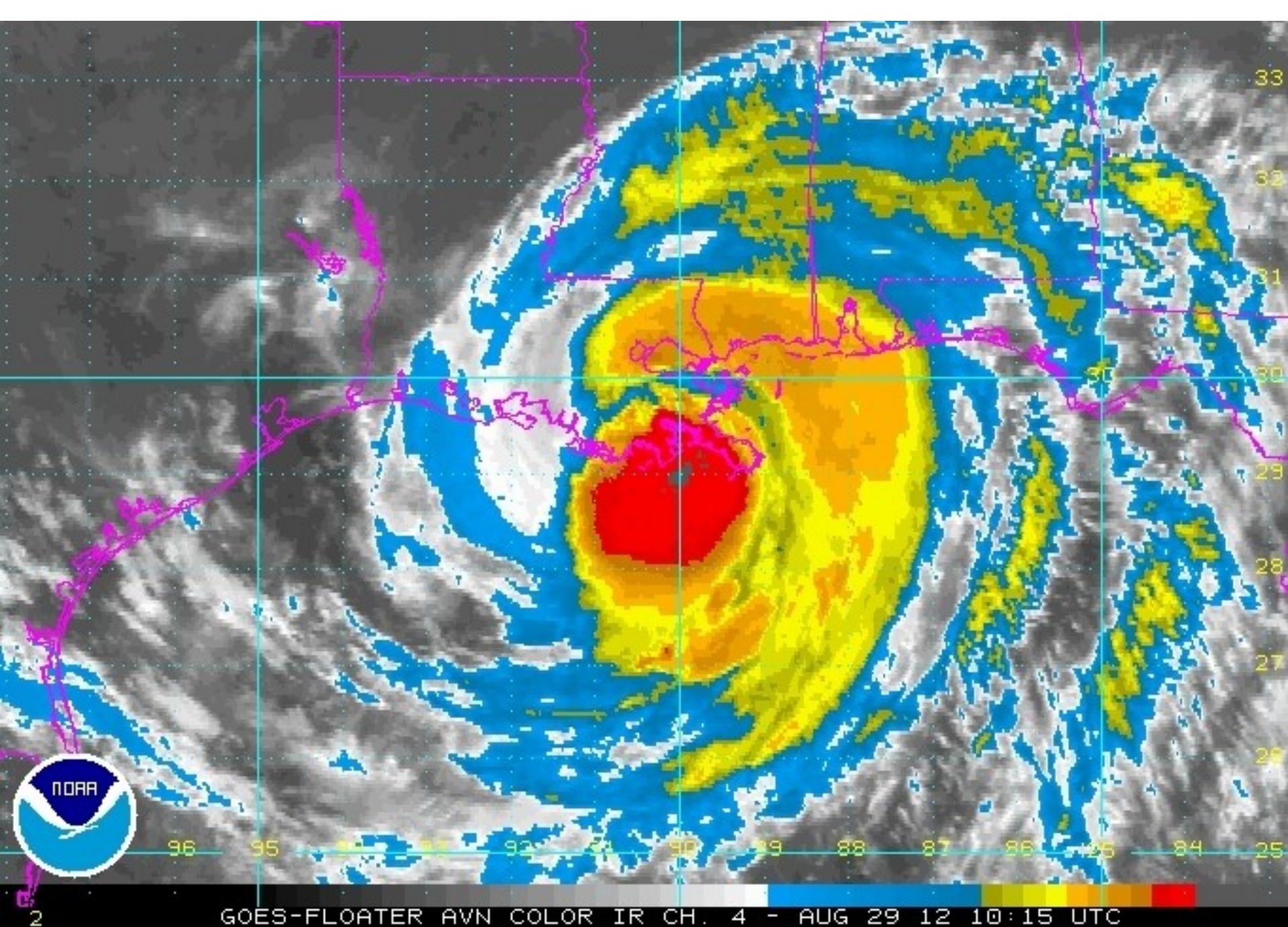
**LOUISIANA DEPARTMENT OF
AGRICULTURE & FORESTRY
MIKE STRAIN DVM, COMMISSIONER**



Protecting Food, Agriculture and
Public Safety

All Hazards Response

- Fully staffed Incident Management Team
- ESF-11 and ESF-4 for State of Louisiana
Emergency Operations Plan
- Internal Resources; personnel and equipment
- External Resources; support agencies, NGO,
and industry partners
- Support to local response



GOES-FLOATER AVN COLOR IR CH. 4 - AUG 29 12 10:15 UTC

2



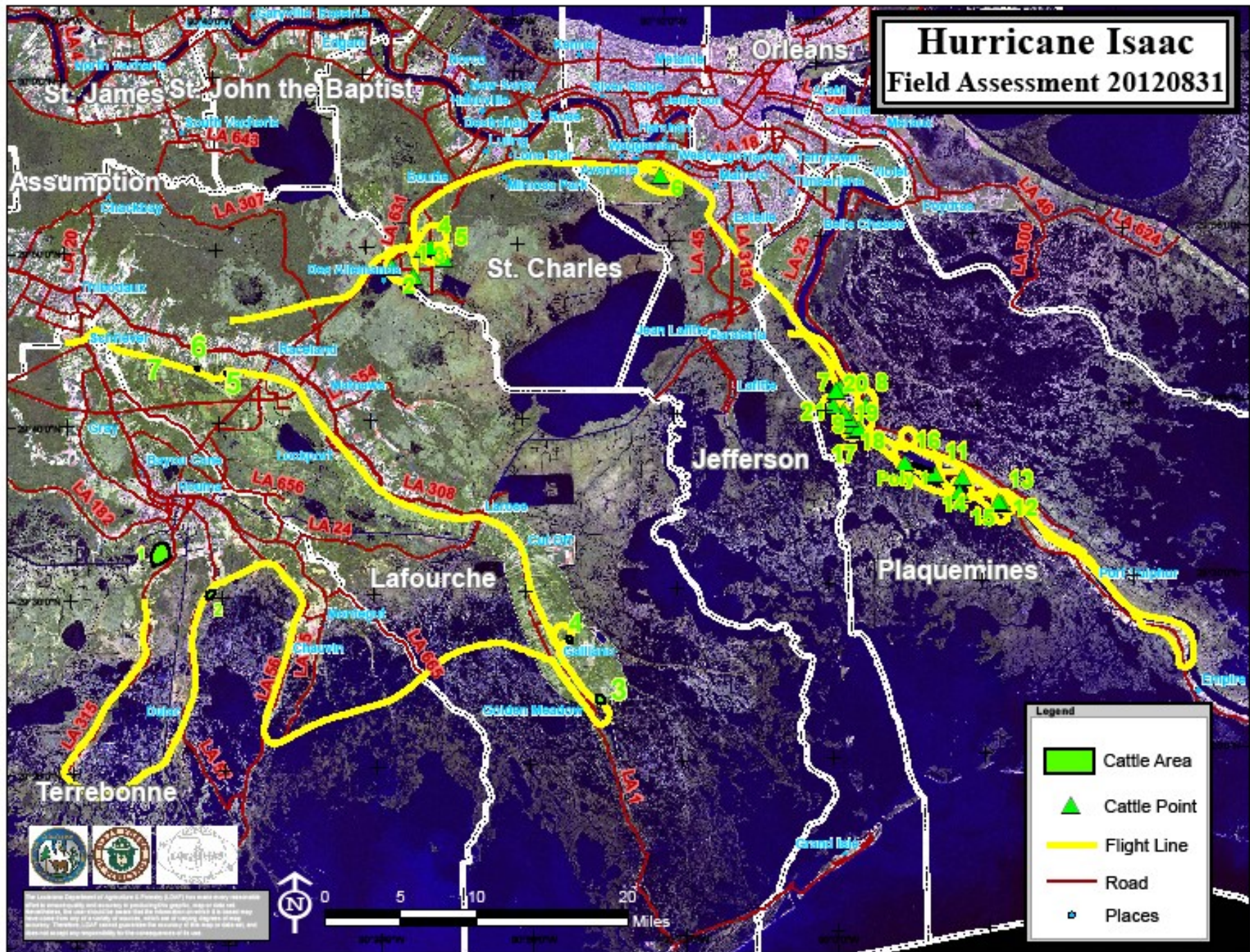








Hurricane Isaac Field Assessment 20120831



The Louisiana Department of Agriculture and Forestry, the Louisiana Department of Transportation and Infrastructure, and the Louisiana Department of Wildlife and Fisheries are proud to provide this information to the public. The data was collected by the Louisiana Department of Agriculture and Forestry. The Louisiana Department of Transportation and Infrastructure and the Louisiana Department of Wildlife and Fisheries provided support and resources for this project. The Louisiana Department of Agriculture and Forestry is the lead agency for this project. The Louisiana Department of Transportation and Infrastructure and the Louisiana Department of Wildlife and Fisheries are also involved in this project. The Louisiana Department of Agriculture and Forestry is the lead agency for this project. The Louisiana Department of Transportation and Infrastructure and the Louisiana Department of Wildlife and Fisheries are also involved in this project.







Louisiana Department of Agriculture & Forestry
 AGRICULTURAL DISASTER ASSESSMENT FORM



(Fill in blanks and circle situation noted during assessments.)

DATE/TIME: _____ ASSESSOR: _____

GPS (Dec. Degrees): N _____, W _____

APPROXIMATE LOCATION: _____

Owner: UNKNOWN KNOWN: _____

SPECIES: Cattle Horses Swine Sheep/Goats Other: _____

#'s affected: _____

Carcass #'s: _____

Body Condition Score: (emaciated) 1 2 3 4 5 (fat)

Water Source: None Flood water Fresh water

Environmental Condition: No forage Temporary forage Adequate forage

Support/Supply needs: None needed Immediate

Immediate needs: None Water Hay Feed Vet. Care Carcass disposal

Duration of support: 3 day supply 1 week supply 1 month supply

Accessibility: Road Boat Air

EVACUATION NEEDED: YES NO

Crop damage: Row crop/Forestry: _____ Acres _____

Comments: _____


Please submit this form to your Parish OEP for a WebEoc request for assistance.

Task Details

[Return to list](#)

Task Details

[Update This Task](#)

Task Number:	831-203755139 001
Task Lead:	SEOC ISB ESF-11 Agriculture and Forestry
Task Description:	<p>As per LDAF John Walther: "We did aerial assessment on the cattle stranded on the levees in Plaquemines today and found approximately 400 head needing hay and water. Billy Fortmeyer number is 504-452-0993 contacted LDAF asking for assistance. Plaquemines parish should enter a webeoc request for assistance for the stranded cattle. Call me with any questions. Cell 985-438-6111" Airborne Field Data Collection: August 31, 2012 Lafourche & Terrebonne Data Area Info x Long y Lat 1 cattle,30, flood_water, surrounded -90.73471 29.54243 2 cattle,needs none,30, -90.68019 29.50318 3 cattle,6-10,needsnone -90.25493 29.39501 4 cattle,21-30,flood_water,surrounded -90.28677 29.45258 5 cattle,31-50,on levee -90.65533 29.71515 6 cattle,1-5,flood_water,surrounded -90.68935 29.72082 7 cattle,21-30,flood_water,surrounded -90.73907 29.72911 Plaquemines, St. Charles & Jefferson Data Area Info x Long y Lat 1 21-30,cattle, -90.44976 29.80468 2 11-20,cattle, -90.47270 29.81338 3 21-30,cattle, -90.43832 29.83006 4 21-30,cattle,stranded on levee -90.43021 29.83170 5 31-50,cattle, -90.41476 29.82032 6 6-10,horses -90.17487 29.89584 7 100+,cattle,on highway -89.98238 29.68781 8 6-10,on highway -89.95581 29.67078 9 100+,cattle,flood_water,strand -89.96756 29.64672 10 11-20,cattle,flood_water,needs -89.96983 29.65129 11 76-100,,cattle,flood_water,needed -89.88127 29.60282 12 6-10,cattle,needs,hay,on road -89.80815 29.57229 13 hwy underwater north of here -89.81220 29.57460 14 billy nungessers home -89.85097 29.59844 15 randy f. catchpen w/ cows/ 1 d -89.85473 29.58487 16 cattle,1-5, -89.91388 29.61448 17 6-10,cattle, standing in debris -89.96358 29.64835 18 farthest access point -89.97340 29.65846 19 6-10,cattle, stranded -89.97996 29.66480 20 51-75,cattle,stranded -89.99133 29.67069 21 cattle,31-50, on levee -89.98709 29.68586 Poly 1 cattle,flood_water,immediate,support -89.89500 26.60900</p> <p>THERE IS CURRENTLY AN 18-WHEELER LOADED WITH 20 BALES OF HAY READY TO DISTRIBUTE TO STRANDED CATTLE. WE ARE ALSO REQUESTING COORDINATION WITH AIR TRANSPORT, GUARD HAS S/A OF THIS MISSION REQUEST!</p>
Estimated Cost:	
Priority:	Medium (12 - 24 hours)
Status:	Assigned
Attachment(s):	
	<p>Demob fuel and tank daylight hours 09/06/12. LDAF will demob other assets not in use. Cattle handling equipment will remain until needed. Detailed summary of activities and cost estimate to follow. SEOC ISB ESF-11 Agriculture and Forestry - John Walther at 17:40:12 on 9/5/2012</p> <p>per Liz:</p> <p>Hay delivery by Helicopter is complete. The Hay, Feed and Fuel is staged in parish for use by livestock producers on as needed bases for stranded livestock. (Lauren Mr John would like to keep this request open. I'm just giving you an update.) SEOC ISB ESF-11 Agriculture and Forestry - Lauren Robillard at 11:51:45 on 9/5/2012</p> <p>Liz Wilcox is waiting to receive latest update from John Walther. She will call with update shortly.</p>

Agricultural Branch Ops

- Resource request and operational needs from affected Parishes tasked to ESF-11
- Resource allocation based on aerial and ground assessments by LSU Ag Center and LDAF
- LDAF assets combined with donated hay sustains livestock stranded by flood waters
- Livestock Brand Inspection for owner identification
- Livestock search and rescue LSART and ASPCA
- Continued assessment to advise Parishes

OPERATIONAL PLANNING WORK SHEET

1. INCIDENT NAME

2. DATE PREPARED

3. OPERATOR (DATE/TIME)

TIME PREPARED

4. DIVISION/GROUP OR OTHER LOCATION	5. WORK ASSIGNMENTS	6. RESOURCES BY TYPE (SHOW STRIKE TEAM AS ST)										7. REPORTING LOCATION	8. REQUEST ARRIVAL TIME			
		RESOURCE	LSART	Single Horse		FEED		Single		SMALL						
		TYPE	SAR	COOPER	PAW	DRIVE	KIT	WAG	CON	TRUCK	TRUCK	VAN	VAN	SMALL OFFICE		
CAB	SEARCH + RESCUE REMAINING PETS IN LIVINGSTON PARISH IN LSART CARE	REQ.	1												LSART	TBD
LIVESTOCK GROUP	TAKE CARE OF 20 LWS PANELS & FEED PLAG OEP - ROYAL WIND FERRARA + LEAVE FOR PENNING CATTLE; (20 Bales Hay, 15 Bales Dog Food + 10 BAGS SWEET FEED)	REQ.		1	20	4	2	20	10	18					8056 Hwy 23	ASAP
		HAVE		1	20	4	2	20	10	18					Belle Chase	
		NEED		0	0	0	0	0	0	0						
TRANS BRANCH	Amite - STAGE	REQ.								2		1	4		Florida Amite AREM	24hrs
		HAVE								2		1	4		AMITE	
		NEED								0		0	0			
"	Hammond - STAGE	REQ.								2					LDAF	24hrs
		HAVE								2					HAMMOND	
		NEED								0						
Security BRANCH	LIVESTOCK BRAND INSPECTION/LOADING	REQ.											0		Belle Chase	0800
		HAVE														
		NEED														

ICS 215 WS (9/86)
1374

TOTAL RESOURCES REQUIRED	RESOURCES	1374
TOTAL RESOURCES ON HAND		
TOTAL RESOURCES NEEDED		

10. PREPARED BY (NAME AND POSITION)







O.K. Corral



"O.K. Corral"

TITAN WEST

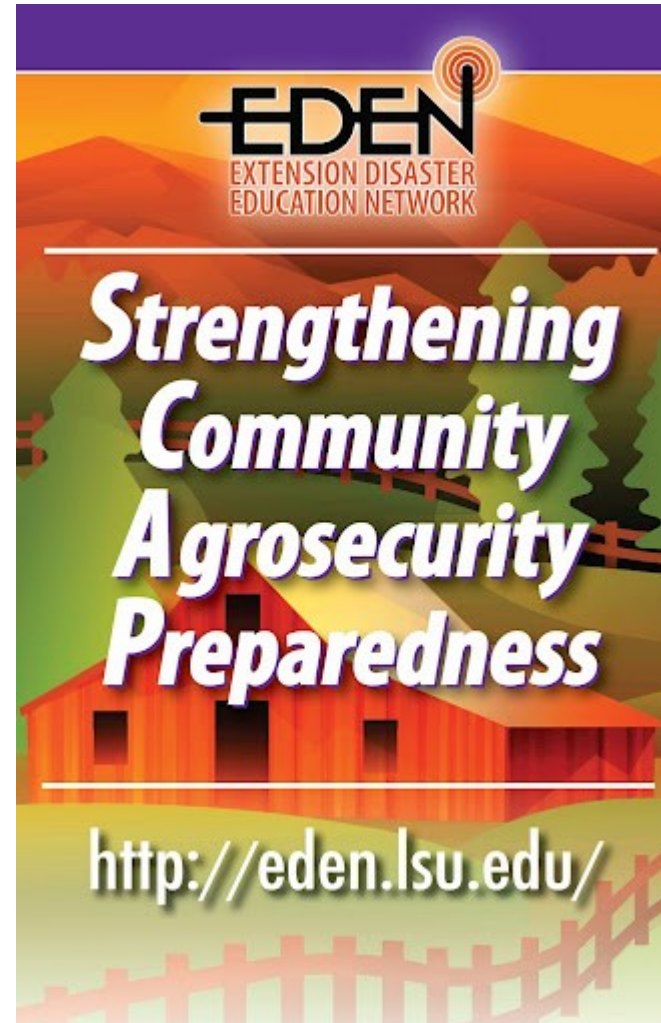
209540

DEERCAMP
THE BEER WINE OUT

PLANTON

Facilitating local planning and response

- LDAF and LSU Ag Center hold regional SCAP training
- Protocol for assessments, communication, and operations
- Local planning and resources first
- Support from State and NGO's



LDAF Emergency Programs

John Walther

jwalther@ldaf.la.gov