

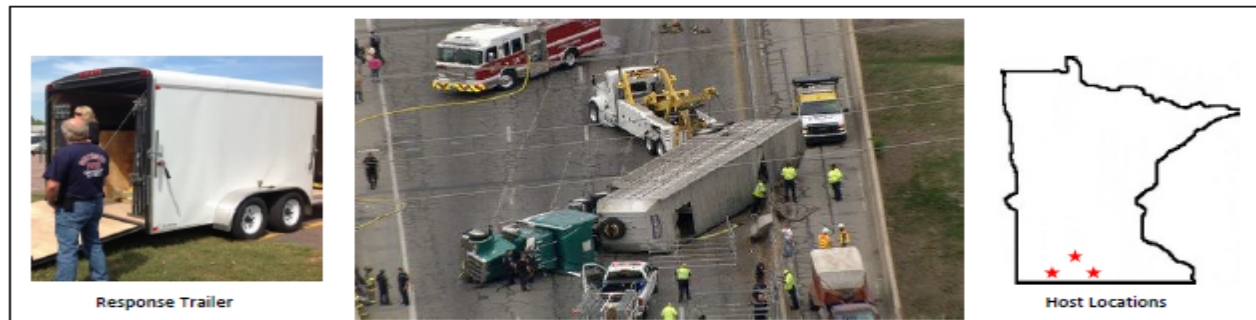
Minnesota Emergency Response Trailers

**MULTI-STATE PARTNERSHIP
PLANNING / POLICY WORKSHOP
Monday – Wednesday, February 23-25, 2015**

Mike Starkey
Emergency Planning Director
Minnesota Department of Agriculture
625 North Robert Street
St. Paul, MN 55155
Work: 651-201-6286
Cell: 651-755-2721
Michael.Starkey@state.mn.us



Livestock Response Trailer Dispatching Procedures Spring 2014



Response Trailer

Host Locations

What this is

- Trailer to assist with any livestock transportation accidents
- Contains equipment that assists in the handling of animals post-incident.
- This trailer is not for transporting animals.

Sleepy Eye Trailer
Sleepy Eye Fire Department

Brown County Dispatch:
(507) 233-6720

Trailer Location:
Brown Co. Highway Department
Highway 14 West of Sleepy Eye
Sleepy Eye, MN 56085

How to get it

- Responders will request the trailer via dispatch
- Dispatch will contact one of the 3 host agency contacts listed below
- Hosting agency will bring trailer to scene
- Receiving agency will clean and restock the equipment after use

Fairmont Trailer
Fairmont Fire Department

Martin County Dispatch:
(507) 238-4481

Trailer Address:
1275 S Hwy 15
Fairmont, MN 56031

Questions to ask

- What kind of animal is involved? How many?
- Are they loose?
- What condition are they in?

Worthington Trailer
Worthington Fire Department

Nobles County Dispatch:
(507) 372-8430

Trailer Address
830 2nd Ave
Worthington, MN 56187

Response Trailer Equipment List

Item Description	Quantity	Item Description	Quantity
Disposable Coveralls (XXL)	5	Grain Shovel	1
Disposable Coveralls (XXXL)	5	Utility Knife with Blades	1
Leather Gloves (L)	2	Vice Grips	1
Leather Gloves (XL)	2	Bungee Straps (Assortment)	10
Rain Suits (XL)	2	Zip Ties (100 count)	2
Knee Pads (Pair)	2	Tarp (8' x 10')	2
Safety Glasses	2	Tarp (12' x 16')	1
Ear Plugs	12	Tarp (20' x 30')	1
Bump Hats	2	Tow Straps	2
Paper Towels	2	25 Foot Chains	6
Trash Bags (5 per box)	1	3/4" Plywood (4' x 8')	4
Flash Light	2	8 foot 4 x 4s	6
Flash Light Batteries	4	Poly Fence Roll (4' x 164')	1
Sledge Hammer - Short Handle	1	Cattle / Horse Halters	8
Sledge Hammer - Long Handle	1	Lariat / Soft Rope	1
Hammer	1	Hog Snares	2
16 Penny Nails	10 lbs.	Rattle Paddles	2
Adjustable Wrench	1	Sort Boards	4
Fencing Wire (1/4 mile role)	1	Bleeding Knife	1
Come-a-Long	1	Cargo Trailer	1
Fencing Pliers	1	Cattle Panels (10')	14
Ladder	1	Totes and Tool Box	3
Pliers	1	Small Chain and Snaps	14
Push Broom	1		

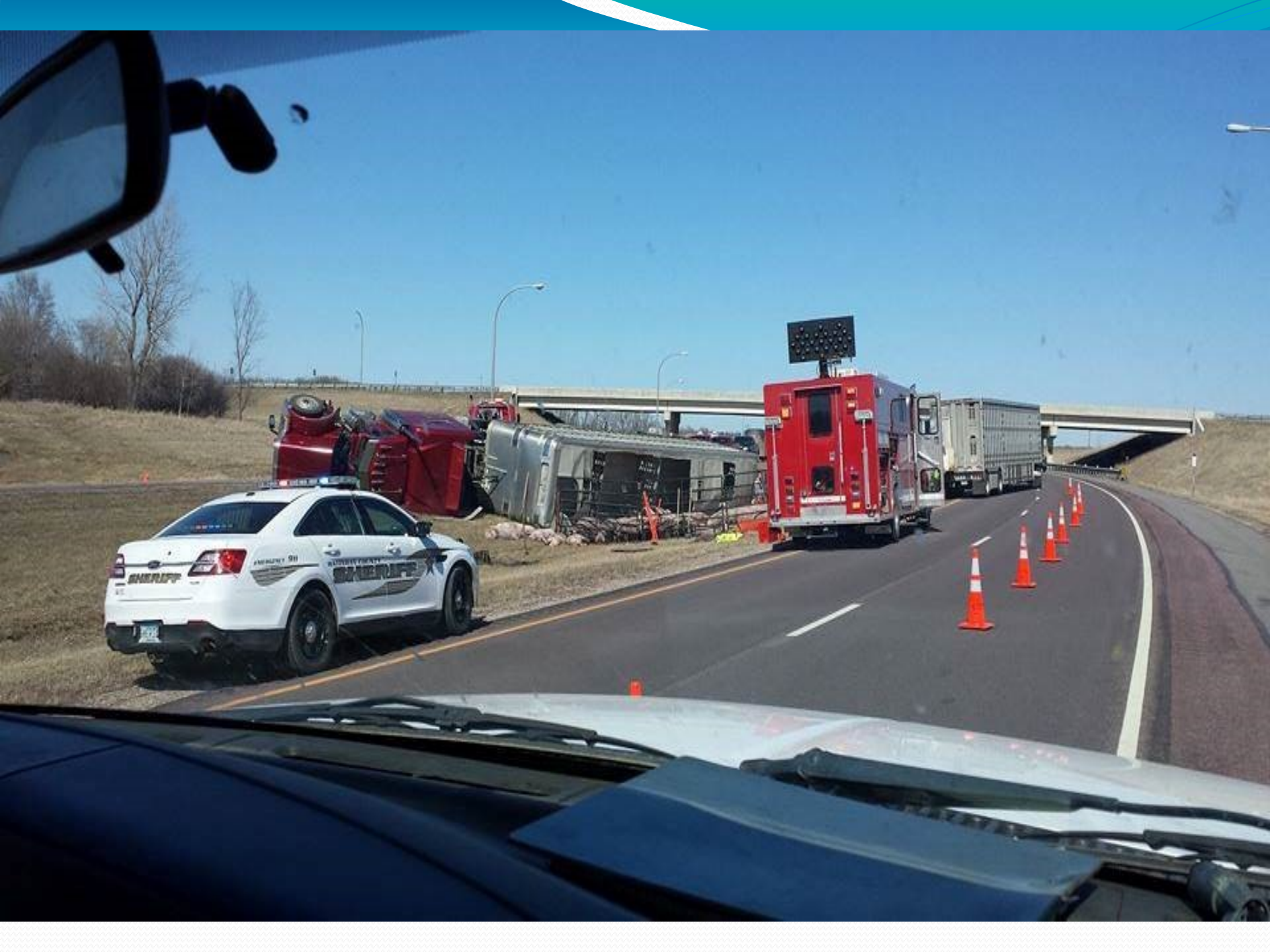
For more information:
Jill Resler - MPB Director of Education
 Phone: (507) 345 - 8814 - Email: jill@mnppork.com



Livestock Emergency Response Trailers

Developed in
 cooperation with:





EMERGENCY 911
SHERIFF

RED FIRE TRUCK

WHITE SEMI-TRUCK

OVERTURNED TRAILER

ORANGE TRAFFIC CONES







Minnesota Chapter 12

Emergency Management

12.22 ASSISTANCE, ACCEPTANCE, RULES.

Subd. 2a. **Volunteer protections.** (a) Individuals who volunteer to assist a local political subdivision during an emergency or disaster, who register with that subdivision, and who are under the direction and control of that subdivision are considered an employee of that subdivision for purposes of workers' compensation and tort claim defense and indemnification.

